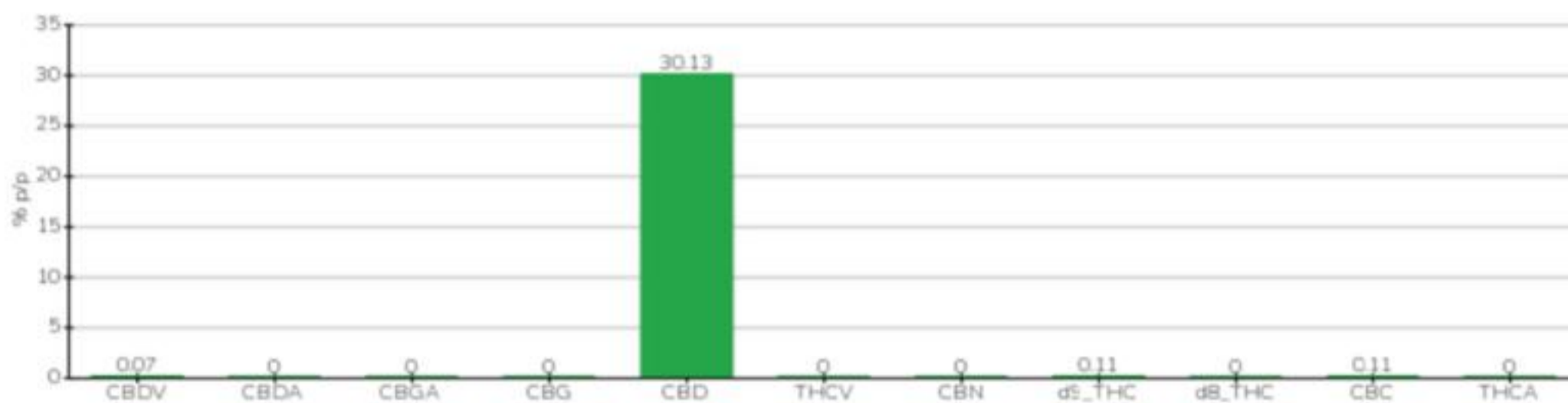


| | | | |
|----------------------------|-------------------|--------------------|--------------------|
| Data accettazione | 09/12/2022 | Tipologia campione | semilavorato |
| Data analisi | 13/12/2022 | varietà | NA |
| Codice riferimento interno | CRY0912.A.8 | N. Cartellino | NA |
| Metodica analitica | HPLC - HS - Rev.2 | Campionamento | a cura del cliente |
| Lotto | | | |

Note

| Parametro | % p/p | Metodo |
|-------------------|------------------|------------------|
| CBDV | 0.07% | HPLC-UV |
| CBDA | <0.01% | HPLC-UV |
| CBGA | <0.01% | HPLC-UV |
| CBG | <0.01% | HPLC-UV |
| CBD | 30.13% | HPLC-UV |
| THCV | <0.01% | HPLC-UV |
| CBN | <0.01% | HPLC-UV |
| d9_THC | 0.11% | HPLC-UV |
| d8_THC | <0.01% | HPLC-UV |
| CBC | 0.11% | HPLC-UV |
| THCA | <0.01% | HPLC-UV |
| CBD TOTALE | 30.13% | CALCOLATO |
| CBG TOTALE | <0.01% | CALCOLATO |
| THC TOTALE | 0.11% | CALCOLATO |

CAMPIONE ANALIZZATO: NA(3.00gr)



Pineto

14/12/2022