

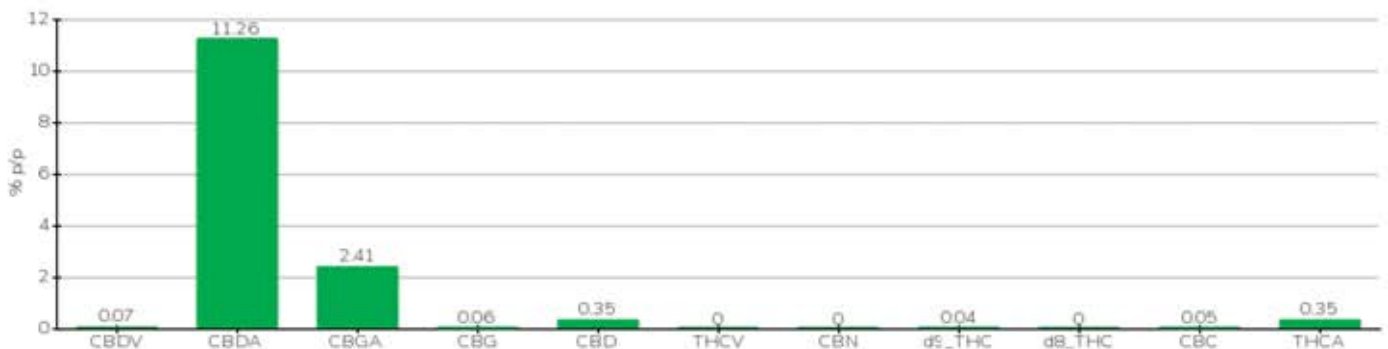
# TECHNICAL REPORT

<b>Committente</b>		<b>Etichetta</b>	HASH CTL PROVA 1
<b>Data accettazione</b>	09/02/2022	<b>Tipologia campione</b>	semilavorato
<b>Data analisi</b>	10/02/2022	<b>varietà</b>	NA
<b>Codice riferimento interno</b>	WED0902.1	<b>N. Cartellino</b>	NA
<b>Metodica analitica</b>	HPLC - HS - Rev.2	<b>Campionamento</b>	a cura del cliente
<b>Lotto</b>	□		

## Note

Parametro	% p/p	Metodo
CBDV	0.07%	HPLC-UV
CBDA	11.26%	HPLC-UV
CBGA	2.41%	HPLC-UV
CBG	0.06%	HPLC-UV
CBD	0.35%	HPLC-UV
THCV	<0.01%	HPLC-UV
CBN	<0.01%	HPLC-UV
d9_THC	0.04%	HPLC-UV
d8_THC	<0.01%	HPLC-UV
CBC	0.05%	HPLC-UV
THCA	0.35%	HPLC-UV
<b>CBD TOTALE</b>	<b>10.23%</b>	<b>CALCOLATO</b>
<b>CBG TOTALE</b>	<b>2.18%</b>	<b>CALCOLATO</b>
<b>THC TOTALE</b>	<b>0.35%</b>	<b>CALCOLATO</b>

CAMPIONE ANALIZZATO: NA(0.00gr)



Pineto

10/02/2022